

# SPECIFICATION

# NEXLEDS®

NEXLEDS LTD



Intertek  
5019904



COLOR Changing  
RGB+2700~6500K



## SMART 12 inch Slim Flush Mount

## NX-FMDR12-RGBCW 15W

### Specification

Product Name :	SMART 12 inch Slim Flush Mount
Model No. :	NX-FMDR12-RGBCW
Specification :	AC120V,60Hz;170mA;15W
Working Temp :	-20~40(°C)
Power Factor :	0.70
CRI(ra) :	>80
Color :	Brushed Nickel
Light Source :	San'an SMD Chip
Lumen :	1200 lm
Life Time :	50000 hrs
Beam Angle :	120°
Product Size :	12 inch
IP :	Damp Location
Application :	Home, Shop, Hotel...
Warranty :	5 years
Standard :	ETL
Dimmable :	5%~100% dimming
Color Temp :	RGB+2700K~6500K



www.nexleds.ca



Email: sales@nexleds.ca

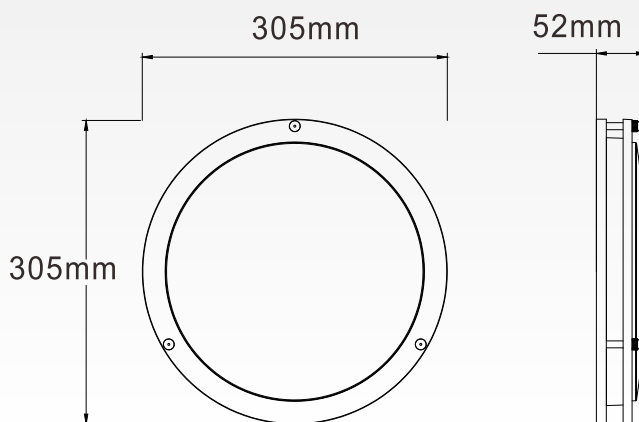
# NEXLEDS®

NEXLEDS LTD

**Feature:**

1. Mobile phone voiced intelligent control home lighting, light scene optional choice Changing the temperature and luminance of light by APP. There are 16 million kind of color that you can choose.
2. Cell-phone Control: Open the remote control APP, enjoy a new lifestyle instead of "get up to turn off lights" or "forget to turn off lights".
3. On /off, timing, brightness adjustment, mode selection, color switching.
4. Wireless module connection , safe and reliable, ultralow power consumption.
5. Built-in global cloud service, extremely reliable system deployment architecture , uninterrupted continuous service time 99.99%.
6. Top level information security.

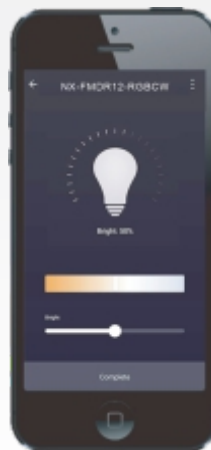
**Product Dimension**



**APP Control:**

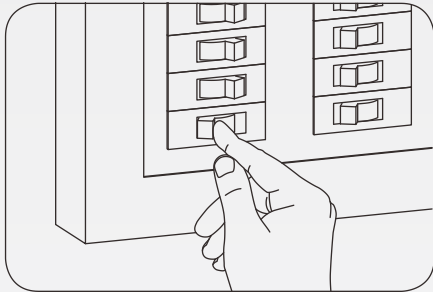


- APP CONTROL
- WIFI ENABLED
- 16 MILLION COLORS
- COOL & WARM
- TIMER
- INTELLIGENT SCENE
- VOICE CONTROL
- SHARE ACCESS

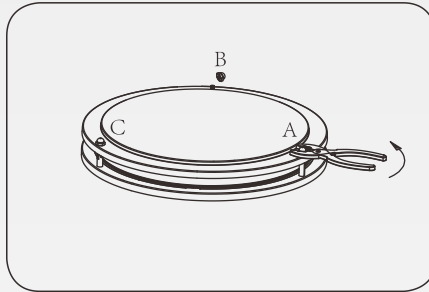


- APP CONTROL
- WIFI ENABLED
- 5-100% DIMMING
- COOL & WARM
- TIMER
- INTELLIGENT SCENE
- VOICE CONTROL
- SHARE ACCESS

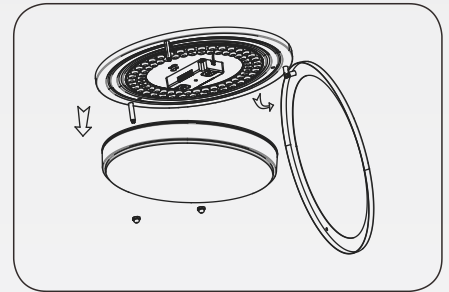
**Installation:**



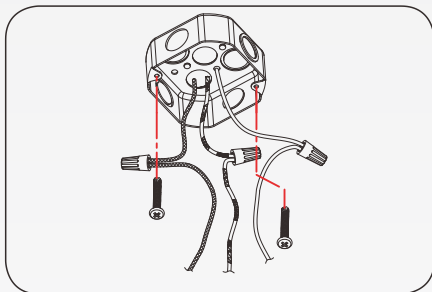
❶ For safety, turn off the main power before installation.



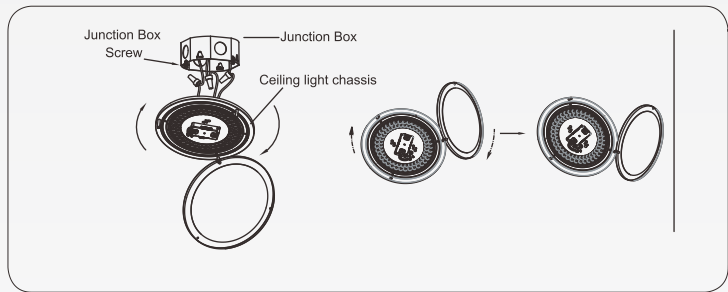
❷ Unscrew the nut with pliers.



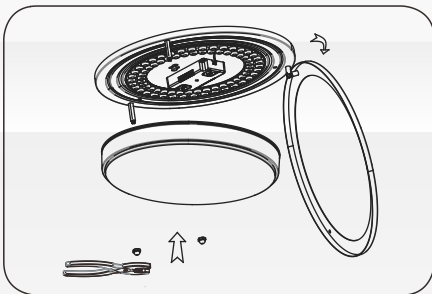
❸ Remove lampshade and ring.



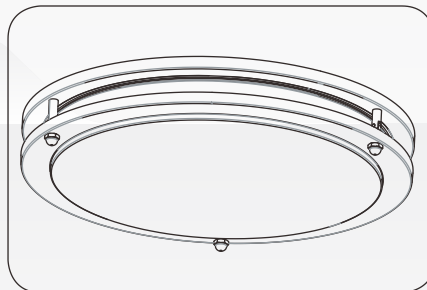
❹ Connect the wires of the ceiling light to the wires on junction box, L-L, N-N, GND-GND.



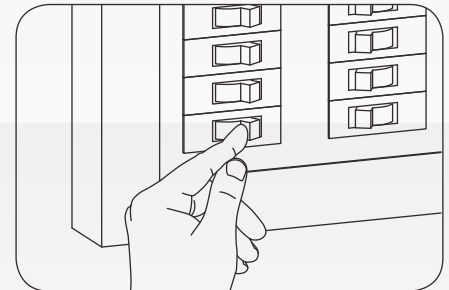
❺ Align the ceiling light chassis with junction box screw, Screw it into the junction box by hand as the direction shown in the figure, then use a screw driver to fasten the junction box screw. Select the CCT which you like in the dip switch outside the fixture.



❻ The lamp shade and ring aligned position clamp into the chassis of the post; Then tighten the nut with pliers.



❼ Schematic diagram of assembly completion.



❽ Restore main power to make sure the light is well installed.