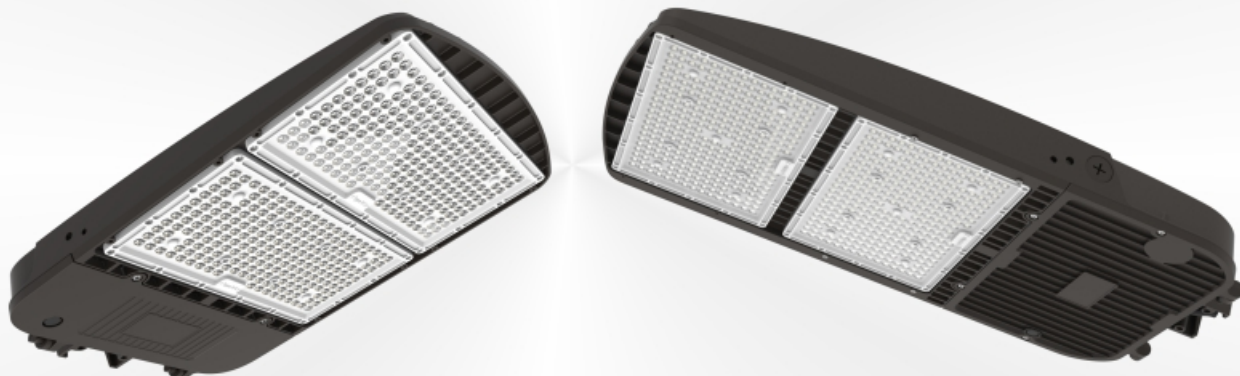


SPECIFICATION

NEXLEDS®

NEXLEDS LTD



240W-200W-150W

Changeable

300W-240W-200W

Changeable

500W-400W-300W

Changeable

3000K-4000K-5000K

Changeable



IP65



VIDEO

LED Area Light

NX-ARS7

Specification

Product Name :	LED Area Light
Model NO. :	NX-ARS7-240/200/150W-H-MV-TCP(XX)-Y NX-ARS7-300/240/200W-H-MV-TCP(XX)-Y NX-ARS7-500/400/300W-H-MV-TCP(XX)-Y
Specification :	AC120-347V; 50/60Hz; 2200mA; 240-200-150W Changeable AC120-347V; 50/60Hz; 2750mA; 300-240-200W Changeable AC120-347V; 50/60Hz; 4583mA; 500-400-300W Changeable
Working Temp :	-40~45(°C)
Power Factor :	0.9
CRI(ra) :	>80
Color :	Brown color
Light Source :	Luminus SMD2835
Lumen :	130LM/W
Life Time :	50000 hrs
Beam Angle :	Type 3
Product Size :	19.19*12.4*2.48 inch / 19.19*12.4*2.48 inch / 27.33*13.21*2.86 inch
IP :	IP65
Application :	Walkways, roadways, campuses and other public areas
Warranty :	5 years
Standard :	UL
Color Temp :	3000K-4000K-5000K Changeable

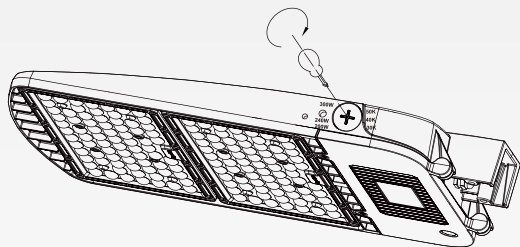
Feature:

1. High efficiency LED Driver, the wide range input voltage 120-347VAC .
2. Lumileds LED high luminous efficiency and long life.
3. Cast aluminum design, better cooling and easy replacement, light quality, LEDTj<185°F.
4. Excellent optical design, greatly improve the light utilization and evenness.
5. Photocell Control Available (Option).
6. 0-10V dimming.

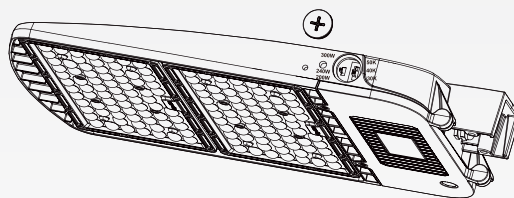
CCT / Wattage Selectable:

Adjust power and color temperature installation:

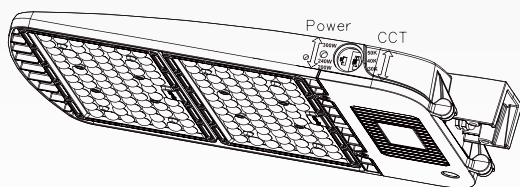
1. Unscrew the plug screws using screws, as shown in Figure 1.



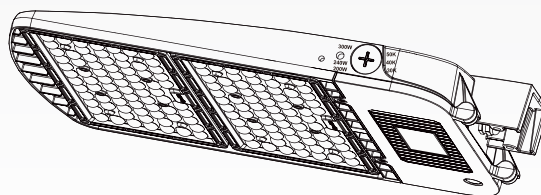
2. Remove the plug screw, as shown in Figure 2.



3. Flip the color temperature switch to the desired color temperature, flip the power switch to the desired wattage, as shown in Figure 3.



4. Install plug screws and tighten them with a screwdriver, as shown in Figure 4.



Applications:

