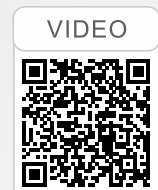
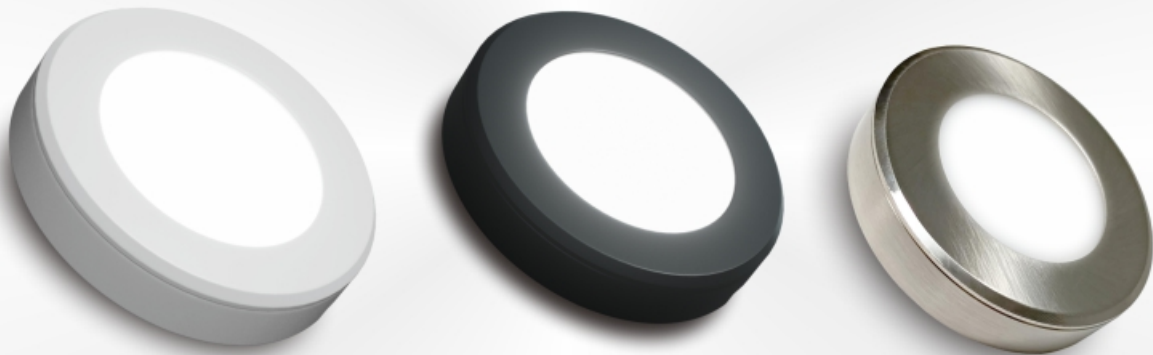


# SPECIFICATION

# NEXLEDS®

NEXLEDS LTD



## 3CCT LED Puck Light

**NX-2PL-243W-3CCT-W**  
**NX-2PL-243W-3CCT-B**  
**NX-2PL-243W-3CCT-BN**

### Specification

Product Name :	3CCT LED Puck Light
Model No. :	NX-2PL-243W-3CCT-W / NX-2PL-243W-3CCT-B / NX-2PL-243W-3CCT-BN
Specification :	24V DC 3W Max
Working Temp :	-20~40(°C)
CRI(ra) :	>80
Color :	White / Black / Brushed Nickel
Material :	aluminum
Light Source :	SMD
Lumen :	210 lm
Life Time :	30000 hrs
Beam Angle :	120°
Product Size :	69mm
Cut Out Size :	59mm
IP :	IP21
Application :	Home, Shop, Hotel...
Warranty :	2 years
Standard :	ETL
Triac Dimmable :	Yes
Color Temperature:	3000K-4000K-5000K (3CCT Changeable)

## Description:

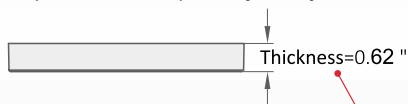
- ◉ This puck light is with flush mount and recessed two installation way. Three-steps color temperatures adjustable, (3000K-4000K-5000K)the appearance is simple and beautiful. Soft light, even luminescence and good coloration.

## Features:

- ◉ The materials of the lamp select the combination of aluminum alloy, good heat dissipation.
- ◉ The three-level adjustable color temperature can meet the different requirements for color temperature and facilitate.
- ◉ Compatible two installation: surface mounted and recessed.
- ◉ With twist and lock design, only 4 steps to finish the installation.
- ◉ CRI>80, create a comfortable lighting environment.
- ◉ Easy to rotate the lamp into the mounting ring and take the lamp out off the mounting ring.

## The design

- ◉ Super slim lamp body, only 0.62 inch.



- ◉ Suitable for damp location.

IP21



- ◉ Visual uniformity, CRI up to 80.

- ◉ Aluminum lamp body, good for heat dissipation, long life time.

## Application:

Suitable for cabinet, bookcases, wardrobes, and other indoor places.



**Dimensions:**



**Instruction:**

**Installation Method**

Before installation, choose favourite color temperature by adjusting the switch at the back of the lamp.



**1: Recessed installation**

<p>1</p> <p>BOARD</p> <p>Cut out <math>\varnothing</math> 59mm</p>	<p>2</p> <p>BOARD</p> <p>Connect the wires, make sure "+" wire to "DC24V +" wire; "-" wire to "DC24V -" wire.</p>	<p>3</p> <p>BOARD</p> <p>Push the lamp into the hole.</p>	<p>4</p> <p>BOARD</p> <p>All Done!</p>
--	---	---	--

**2: Surface mounted installation**

<p>1</p> <p>BOARD</p> <p>Use screws to install the ring to the cabinet board.</p>	<p>2</p> <p>BOARD</p> <p>Connect the wires, make sure "+" wire to "DC24V +" wire; "-" wire to "DC24V -" wire.</p>	<p>3</p> <p>BOARD</p> <p>Rotate the lamp into the ring.</p>	<p>4</p> <p>BOARD</p> <p>All Done!</p>
---	---	---	--